



Town of Bluffton x SCADpro

Check in | Week 3 | Sept. 26, 2023

Table of Contents

01	THEME
02	RESEARCH APPROACH
03	GRAPHIC DIRECTION
04	DESIGN APPROACH
05	DIGITAL EXPERIENCE
06	QUESTION + ANSWER



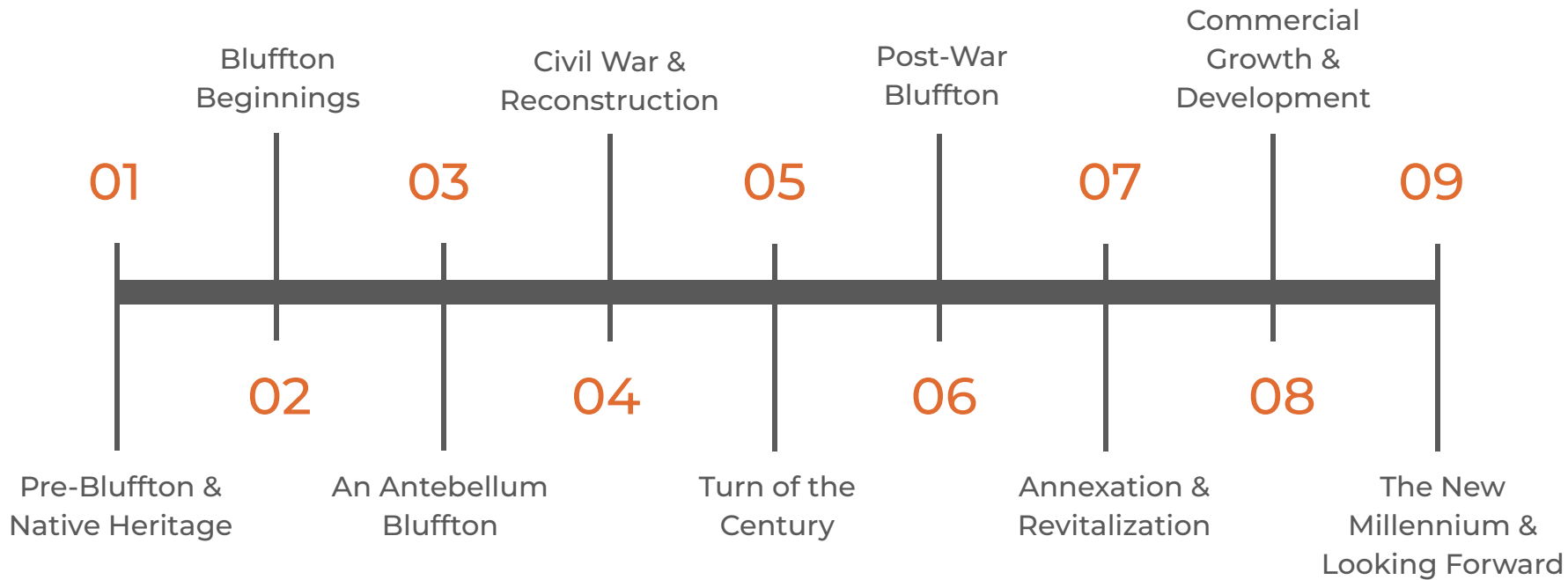
THEME

**Follow the Heart of
Bluffton: A Love Affair**

A stylized map of the United States, where landmasses are represented in a light tan color and water bodies in a light blue color. The map is centered on the continent, showing the outlines of the major landmasses and surrounding waters.

Research Approach

Research + Writing Team



01

Pre-Bluffton and Native Heritage

- Yemassee Indians fleeing Spanish missionaries and seeking trading and education opportunities come to the Carolina area c. 1687.
-
- Establishment of ten towns and friendly relationships with colonists.
-
- The 1715 Yemassee War and subsequent migration, making way for English settlers.

02

Bluffton Beginnings

- 1718 - the Lords Proprietors section the area into several baronies, including the Devil's Elbow Barony
-
- Sir John Colleton, a planter from Barbados and first titled land owner in the area
-
- Land is sold to Benjamin Walls and James Kirk
-
- Plantations begin to appear around 1728 forming the beginnings of Bluffton as a commercial center

03

An Antebellum Bluffton

- Gullah Geechee Culture
-
- First summer homes are built in the early 19th century to escape heat and insects
-
- The name of Bluffton is agreed upon by the Kirk and Pope families in the 1840s
-
- 1852 - Bluffton is officially incorporated by an act of the South Carolina General Assembly

04

Civil War and Reconstruction

- December 1860, South Carolina is the first to secede
-
- The “Bluffton Movement” and “Secession Oak”
-
- June 4th, 1863, an estimated $\frac{2}{3}$ of the town is burned down by Union forces, devastating the town
-
- Reconstruction doesn't fully pick up until the 1880s due to high costs

05

The Turn of the Century

- After 1900, the town began to quickly grow with summer homes making a return and shops opening
-
- Local economy began to depend on seafood shops and construction of oyster sloops
-
- The 1926 construction of Coastal Highway (US 17) diminished much of the growth and the economy declined

06

Post-War Bluffton

- Commemoration of WWII veterans
-

- Bluffton Telephone Company (Cantrell Family)
-

- Capturing the 1950s Feeling (Music of Luke Peeples)
-

- First bridge constructed from the mainland to Hilton Head Island (1956)
-

- Desegregation of Bluffton High School (1965)

07

Commercial Growth And Development

- Bluffton as a Hunting Estate (Richard Wilson & Union Camp)
-

- Relationship with and influence of Hilton Head Island
-

- New residential development
-

- Bluffton Oyster Factory

08

Annexation & Revitalization

- New Communities
-

- Historic Designation
-

- Conservation of the May River

09

The New Millennium & Looking Forward

- Old Town Master Plan
-

- Bluffton's Civic Accolades
-

- Revival of the Arts & Cultural District
-

- Population Growth & Shift
-

- Hispanic Community as Bluffton's largest minority

10

History of the Squire Pope House

- Family letter
-

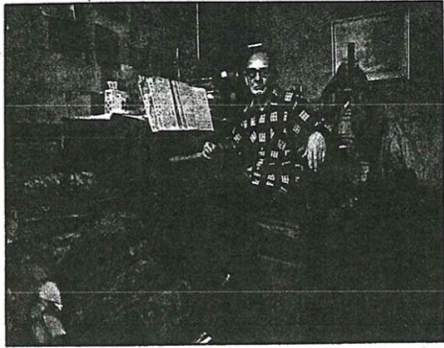
- Objects found in the front lawn
-

- The original house burned down by the Union
-

- The floor plan and how it is a combination of three different houses
-

- The rehabilitation of the house

Personal Stories



Luke Peeples lives alone in the house where he grew up with 13 brothers and sisters. At night he sometimes plays his own musical compositions on his old piano.

The Peeples Family

Rosie Berdych



My caption: Rosie Berdych, 7 years old, Bluffton, South Carolina, February 1913. Photo by Lewis Hine.



Ex-hippie Brandon Waring and his wife, Shellee



Owners of Devil's Elbow Island, Harry and Lucy Cram



"The town potters, Elson Mingleford and Jacob Preston



Ex-Chicagoans who love it, Betsy and Ben Caldwell

Harry Cram

The Bluffton Broadcasting Company

Ollie's Truck



Graphic Direction

Graphics Team

Presentation Style Guide

47464B



5E5E3E



C5D4E6



E16C32



F6ECE0



TYPEFACES

Titles

Secondary: Montserrat Semibold

ABCDEFGHIJKLMNOPQRSTUVWXYZ

abcdefghijklmnopqrstuvwxyz

Body Copy

Inter Normal

ABCDEFGHIJKLMNOPQRSTUVWXYZ

abcdefghijklmnopqrstuvwxyz

Presentation Style Guide

Example

Headers: 24pt

—● **TOWN OF BLUFFTON**

Sub-headers: 18pt

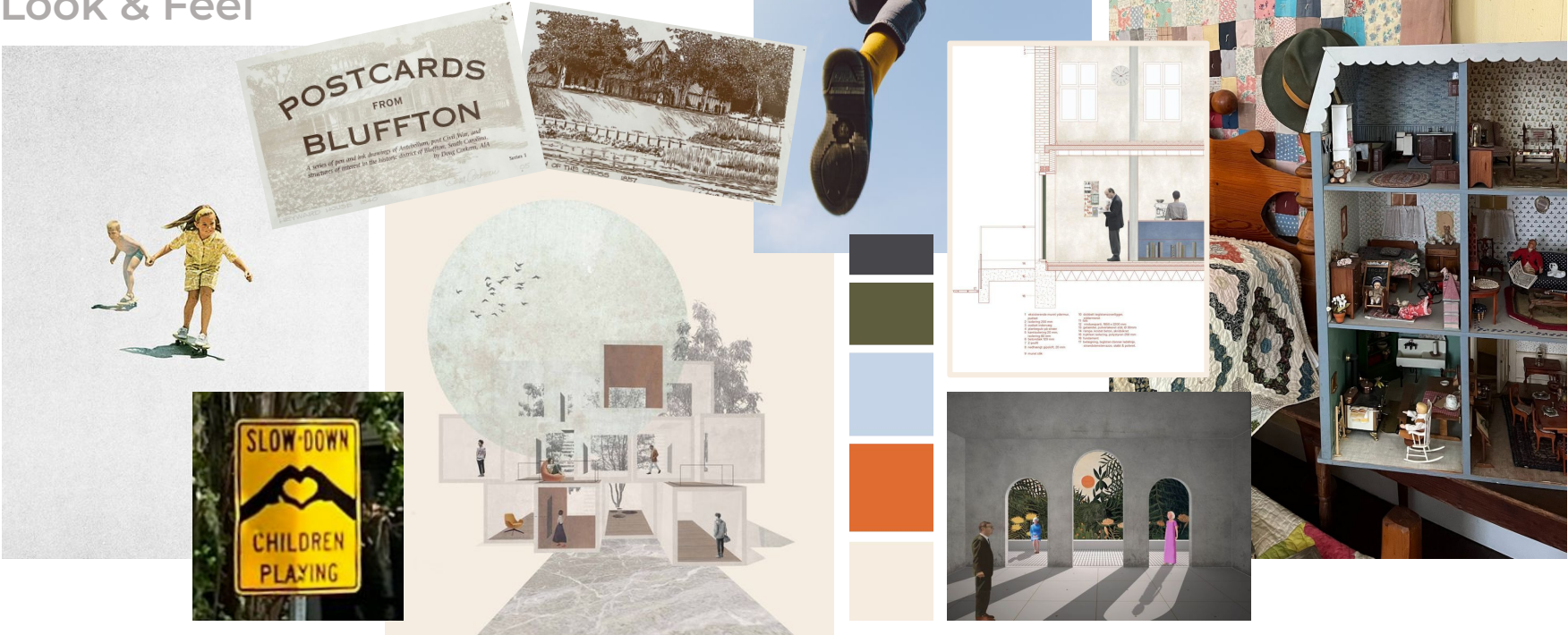
—● **Welcome Center Project**

Presentation Body Text: 12pt

—● Located in the center of Beaufort County, South Carolina, Bluffton is known as the “Heart of the Lowcountry.” Bluffton offers a strategic location for residents, businesses and guests. Bluffton is also central to other Lowcountry towns and Southeastern attractions such as Hilton Head Island, Beaufort City, Charleston, Savannah, Georgia and Jacksonville, Florida.

Art Direction Proposal for Welcome Center

Look & Feel



Art Direction proposal for Welcome Center

Typefaces + Example

DISPLAY TITLES
DAZZLE UNICASE
ABCDEFGHIJKLMNOPQRSTUVWXYZ

Body Copy
Sofia Pro
ABCDEFGHIJKLMNOPQRSTUVWXYZ
abcdefghijklmnopqrstuvwxyz

Headers: 24pt



TOWN OF BLUFFTON

Sub-headers: 18pt



Welcome Center Project

Presentation Body Text: 12pt



Located in the center of Beaufort County, South Carolina, Bluffton is known as the "Heart of the Lowcountry." Bluffton offers a strategic location for residents, businesses and guests. Bluffton is also central to other Lowcountry towns and Southeastern attractions such as Hilton Head Island, Beaufort City, Charleston, Savannah, Georgia and Jacksonville, Florida.

The background features a complex, organic pattern of overlapping shapes in shades of light blue and beige. The shapes resemble stylized, flowing lines or perhaps a network diagram, creating a sense of movement and interconnectedness. The overall aesthetic is clean and modern.

Design Approach

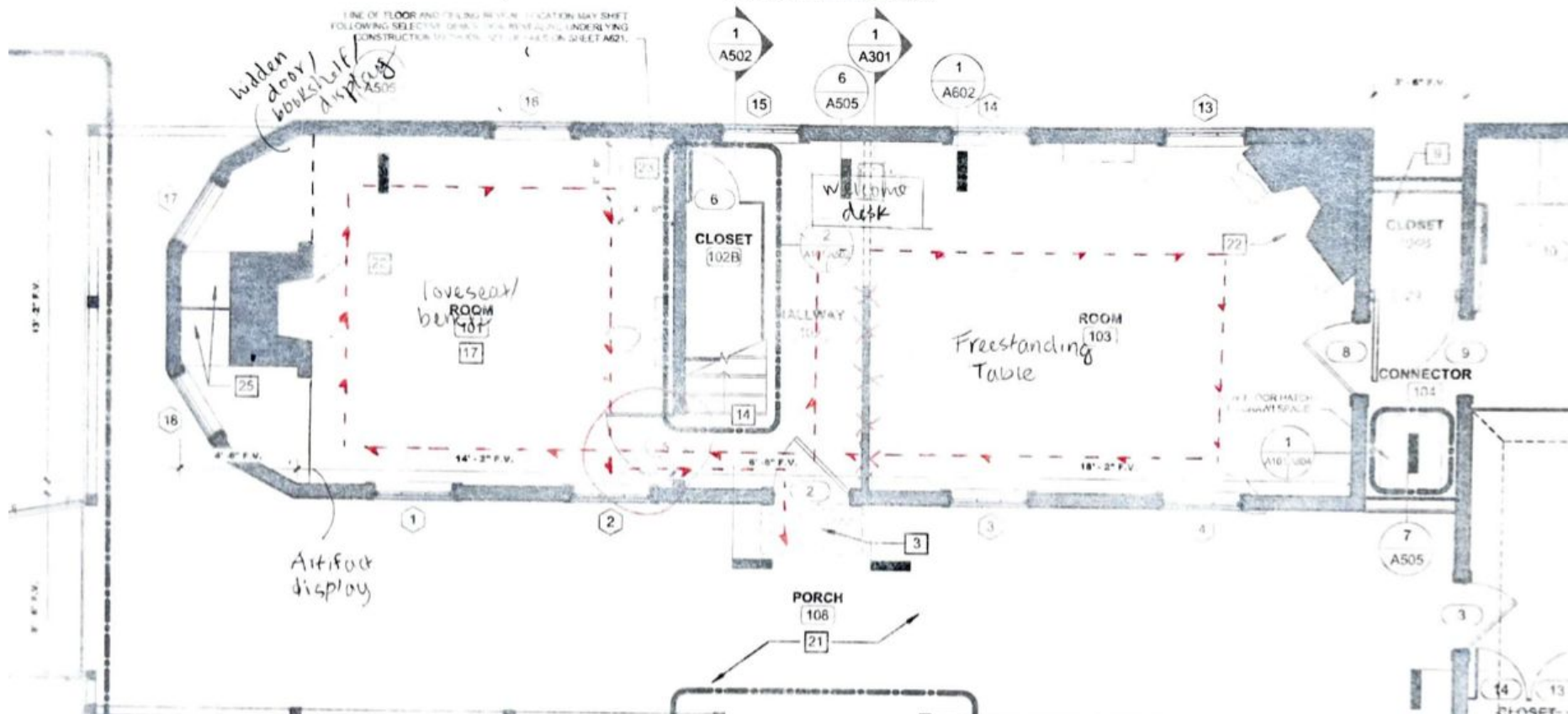
Design Team

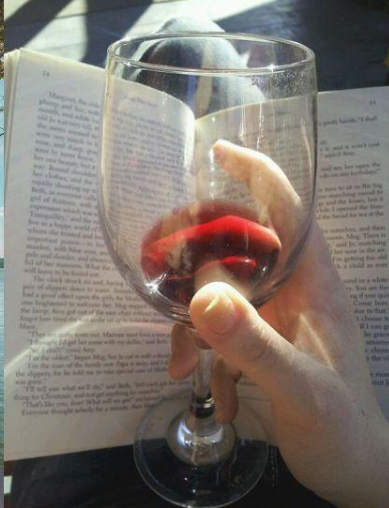
STEM LIGHTING EMERGENCY
 ITA 11-13306

THE ROOM IS TO HAVE A BEAM OF LIGHTING COMING DOWN FROM EXACT LOCATION TO BE DETERMINED FOLLOWING EMERGENCY OPERATION IN ROOM. LATHING AND A LIGHT REVEAL TO BE SCHEDULED TO BE IN PROGRESS WITH REMOVAL OF WALLS TO BE MADE ASKED WHERE BEST TO LOCATE REVEAL IN AREA OF WIDE CUT REVEALING FLOOR INTERIOR WALL AND CEILING.

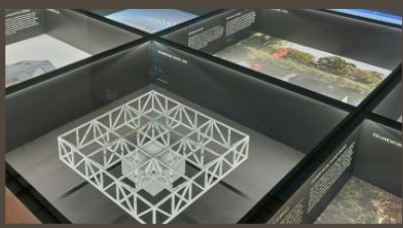
LINE OF FLOOR AND CEILING REVEAL LOCATION MAY SHIFT FOLLOWING SELECTIVE DEMOLITION REVEALING UNDERLYING CONSTRUCTION TO MATCH UP OF FLOOR SHEET A621.

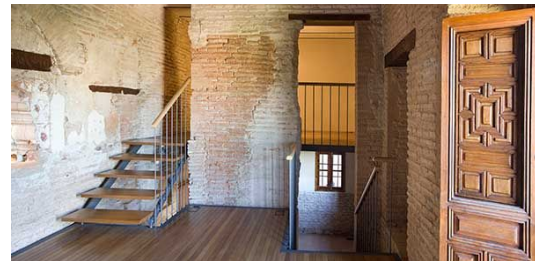
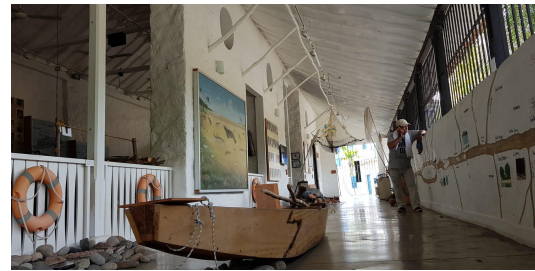
1 2 7 8 13 15 16 18 19





Bluffton State of Mind

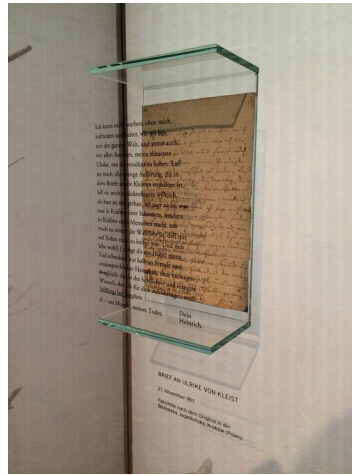




Fireplace mantel/shelves



Source: <https://www.period-homes.com/features/history-federal-style>



Wright family letter

Source:
<https://www.pinterest.com/pin/4714774602360983/>

Desk from repurposed materials



Timeline display

Source:
https://www.flickr.com/photos/jacqueline_poggi/8050710636/in/set-72157631509845320



Source: <https://www.potterybarn.com/products/rustic-reclaimed-wood-desk/>



Hidden door w/
display shelves



Source
:https://laurelberinteriors.com/18-
secret-doors-you-will-be-inspired-
-to-have/

Source:
<https://www.homebunch.com/traditional-english-home-with-large-european-kitchen/>



Moulding
detail/paneling



Source:
<https://www.homebunch.com/traditional-english-home-with-large-european-kitchen/>

Source:<http://sinvithome.com/product/classic-i-panel-moulding/>

eclectic - playful - charming - romantic





Digital Experience

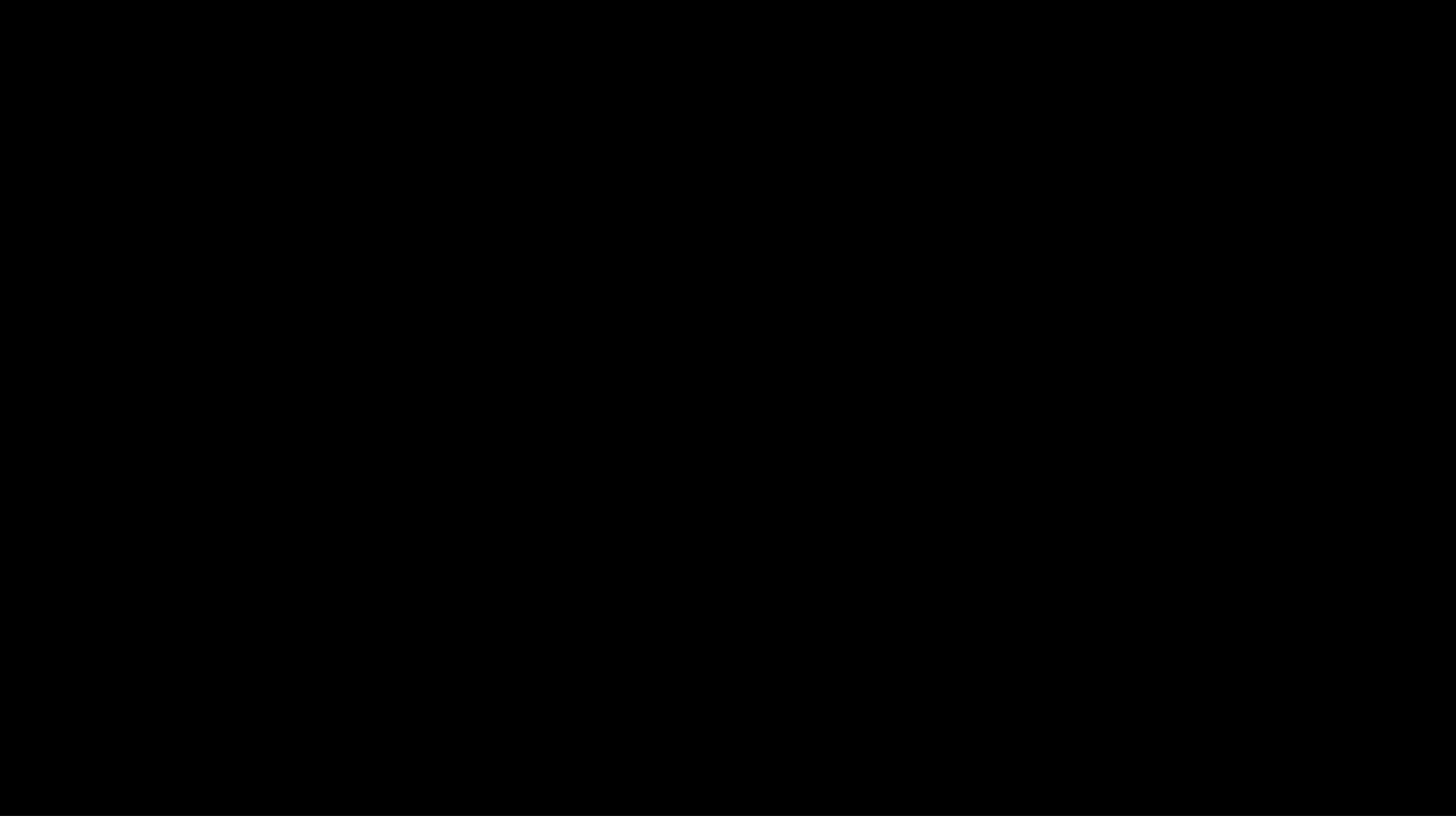
Digital Team

Digital Elements Within Exhibits

Digital Elements

Interactive Map Case Study

[World War II Timeline Experience -
American Battle Monuments
Commission \(abmc.gov\)](#)



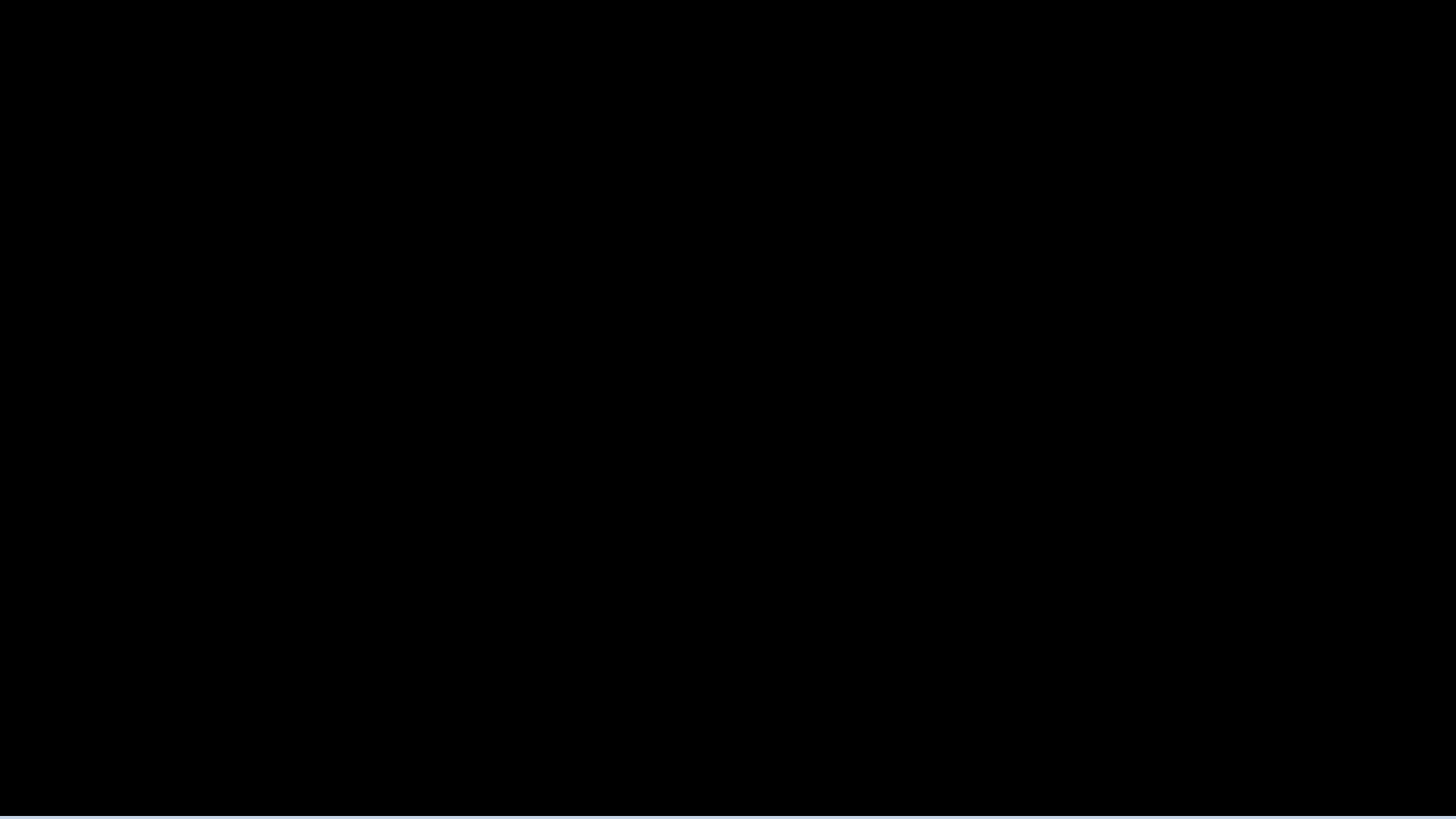
Digital Elements

Interactive Stories

Digital Elements

Interactive AR Stories Case Study

TACTIC | 19 Crimes - User Promo
([vimeo.com](#))

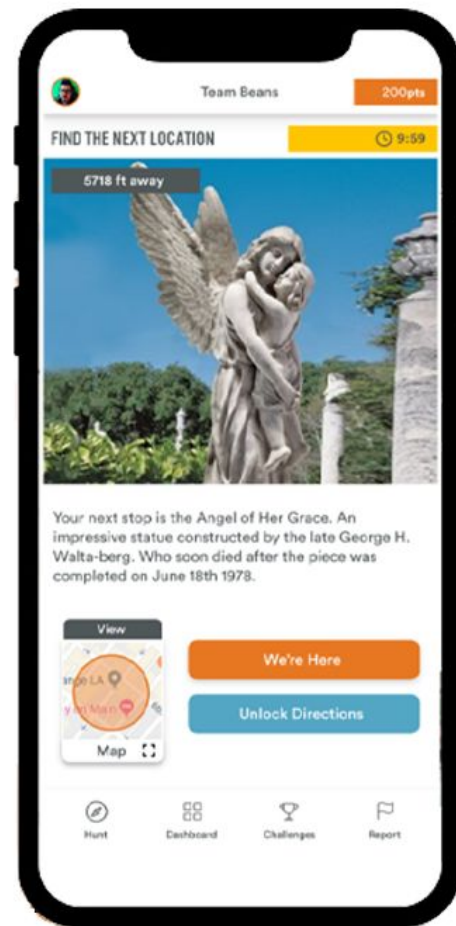
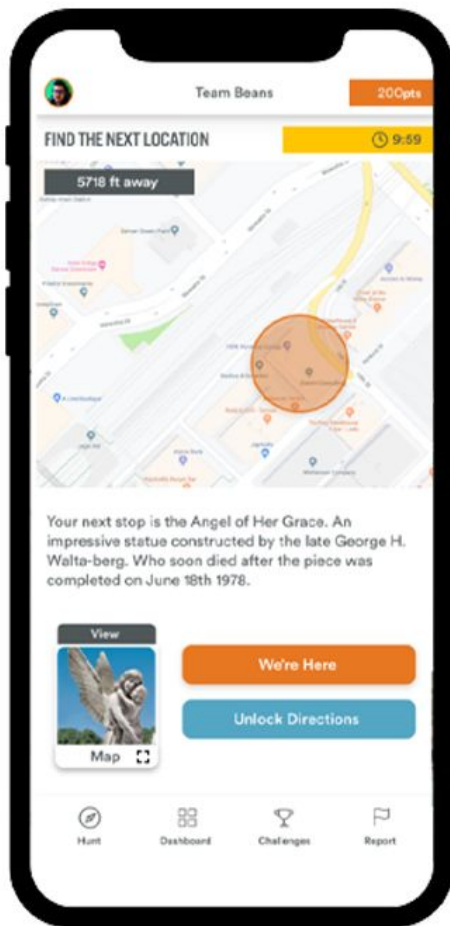


In-App Experiences

In-App Experiences

Welcome Center Experience

Scavenger Hunt



In-App Experiences

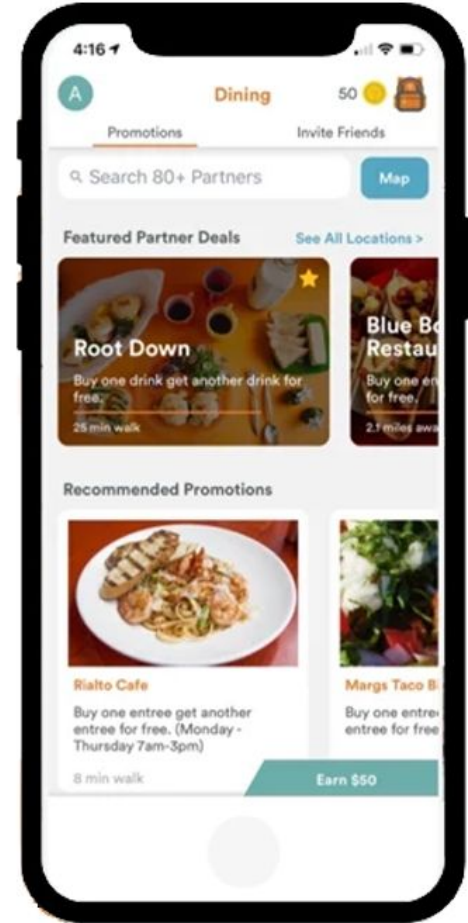
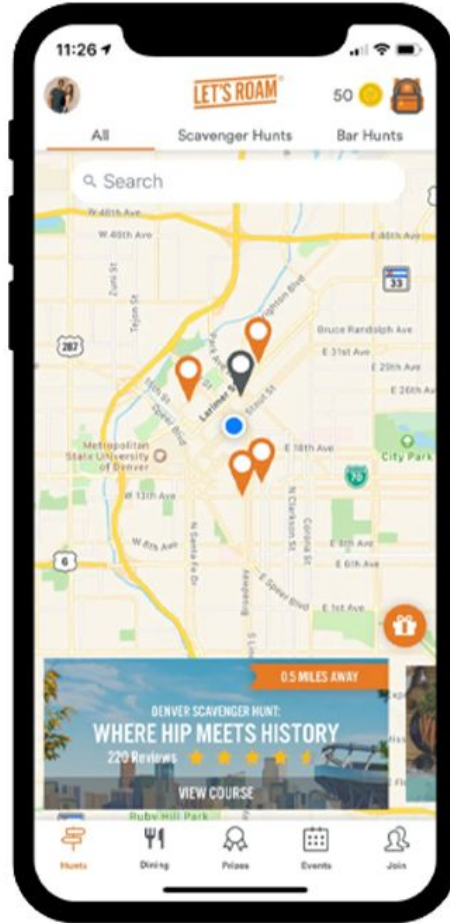
Post-Experience Elements

Maps

City Services

What's Going On

Awards





Town of Bluffton x SCADpro

Check in | Week 3 | Sept. 26, 2023



Question + Answer

Thank You!

